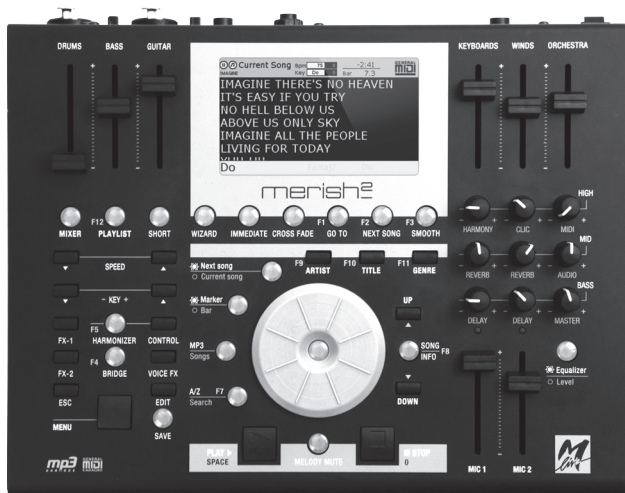


The latest release of the Merish2 retains all the functions of its predecessor. The user manual provides a detailed description of the main functions, which are not described in this addendum.



■ FRONT PANEL



Illuminating Central Enter button

This button serves as an Enter button; in the previous version of the Merish, the Enter button is located on the right of the Alpha Dial:

The Enter button illuminates to indicate that it can be used to confirm or select a file/folder or for activating a specific function.

Illuminating Song Info button

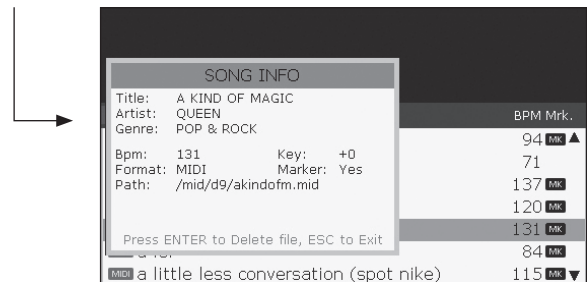
This button displays details for the selected Song or a Song that is playing. Press the Song Info button again (or the ESC button) to close the Song Info window.

Caution: take care to avoid unintentionally DELETING a song from the Song Info window. To delete a Song, locate the cursor on it, press the Song Info button, then press the illuminating central Enter button and confirm. Instructions are provided in the Song Info screen.

This operation can also be carried out by pressing

the DELETE button on the PC keyboard.

Caution: a song cannot be deleted while the Merish2 is playing or where a Song is loaded in the memory. To clear the Merish's memory, press the STOP button twice.



Micro Mixer Section

The Merish2 has a digital Micro Mixer for real time audio control. On the right-hand side of the front panel there are 9 potentiometer knobs, an illuminating button and two sliders. The sliders control the volume of the two microphone inputs. Each knob controls two different parameters in alternation, depending on how the illuminating button (Equalizer/Level) is set. When the light in the button is on, the knobs control the Equalisation of the microphones and the musical backing track (MIDI), controlling the High, Medium and Bass tones as marked on the right.

When the button is off (LED off), the knobs will control the parameters marked in grey, as follows:

Harmony: Vocal harmonisation level when the Harmonizer is active. N.B.: the harmonizer only operates on MIC1.

Click: Click (metronome) output level.

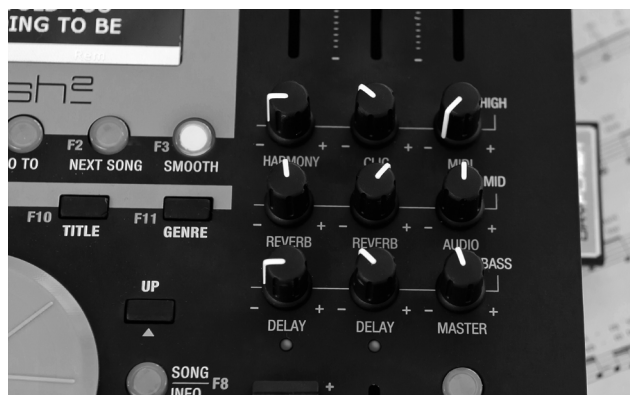
Midi: Level of the Midi File backing track.

Reverb: Reverb send level on the corresponding microphone channel.

Delay: Delay send level on the corresponding microphone channel.

Audio: Mp3 backing track Effects and Bridge level.

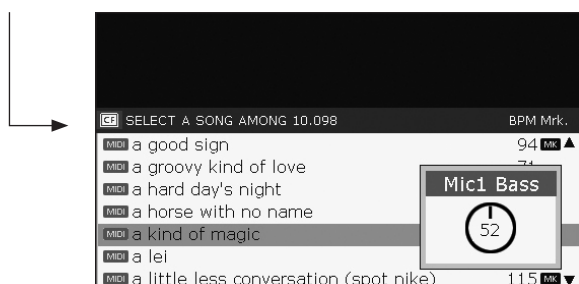
Master: Master volume level.



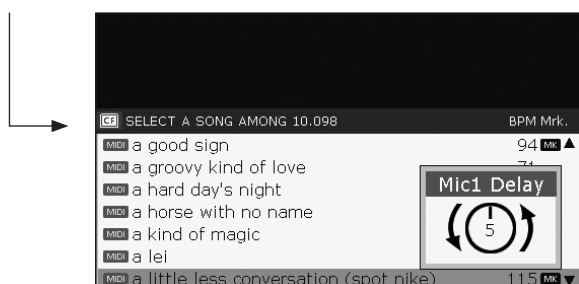
Using the potentiometer knobs

The knobs regulate two different parameters in alternation. For example, the Delay knob can also control the equalizer BASS section.

With BASS setting active (button illuminated), we can adjust the equalizer level by adjusting the knobs to the desired level.



To set the Delay, press the illuminated button (the light goes out) to activate setting of the Delay. As soon as we start to turn the delay knob, the screen displays delay:



The arrow around the circle (which represents the knob) tells us that to modify the value we need to turn the knob to the left, to the setting that coincides with the current value. Upon reaching the position that corresponds to the value saved (5), we can increase or decrease the setting.

Search screen: A/Z Search

[reference to Page 23 of the Merish Manual]

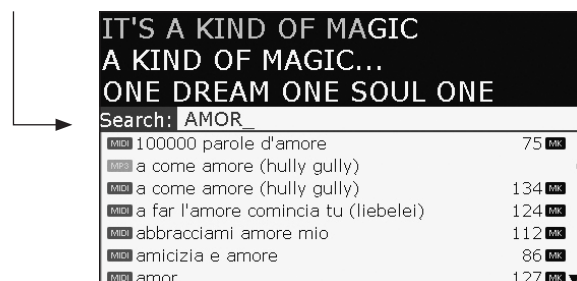
The song search screen is arranged horizontally and displays the full song title. Finding a song is faster and more streamlined lined on the Merish2. The Merish2 includes a PC Keyboard connection (PS2 type) for even faster finding, naming and editing songs.

To access the Search screen, press the A/Z Search button:



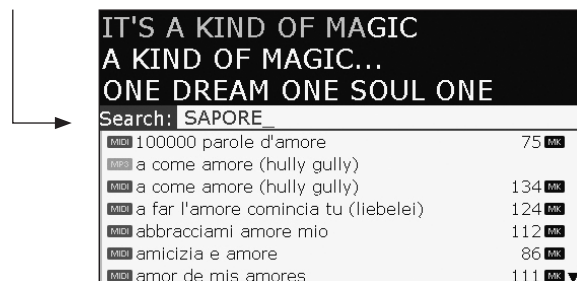
The Search function can be used with or without the PC keyboard connected to the Merish2.

If the keyboard is connected, type the required word and press Enter on the keyboard. The Merish2 will search and display all the titles or artists containing the word. Results appear after 3 characters are entered. Press the Search key twice to confirm the search.



Searching is easy even without the PC keyboard. Press A/Z Search to display the alphabet on screen. Type text by moving the cursor with the Alpha Dial and confirming every letter with the illuminating Enter button. Press the A/Z Search button to confirm the search.

Using the ESC button or Backspace button on the PC keyboard to delete any word or character.



Fast Alphabetical Search

Typing or selecting just one letter (C, for example) and pressing Enter on the PC keyboard or the A/Z SEARCH button displays all the Songs and/or Artists that start with the letter C.

Media/Memory

The Merish2 works with Compact Flash and USB pen storage drives.

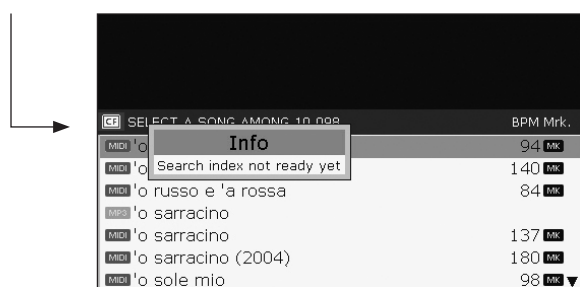
Maximum number of songs

There is no maximum number of songs that can be saved in a USB or Compact Flash storage drive, however we recommend a maximum of 15,000 song files per compact flash or USB. Too many songs on one media may slow song searches. In the unlikely event you have more than 15,000 song files, we recommend adding another USB or compact flash card.

It may take from 3 to 30 seconds from the moment when the storage drive is connected to the drive of the Merish2 to the moment when the device is ready to search. Depending on the number of song files saved in the storage drive. A storage drive containing 8.000 backing tracks will take around 30 seconds to initialise.

It is not possible to perform fast searches during initialising but some functions will be available and navigated using the Alpha Dial.

If the A/Z Search button is pressed during this pause time, the following message will appear:



REAR PANEL



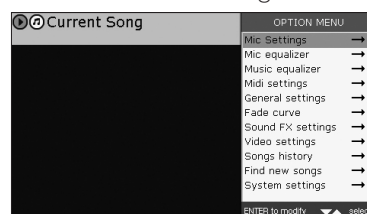
Changes compared to the previous version:

- Addition of the Mic 2 input, a second Microphone input
- Addition of the Keyboard connector, an input for a type PS2 PC keyboard
- The Midi Thru connector is no longer present

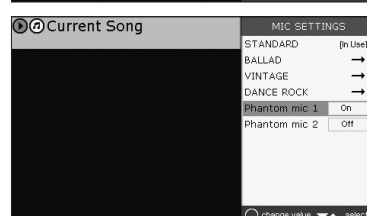
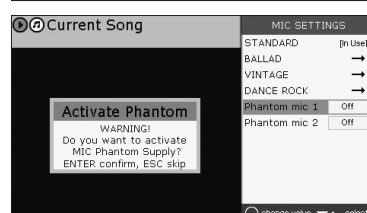
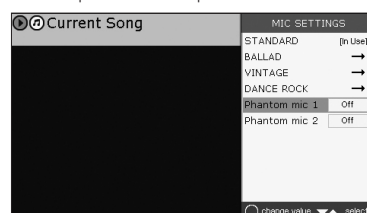
Condenser Microphones

If a Condenser Microphone is used, proceed as follows to activate the Phantom power supply:

- Press the Menu button on the Panel
- Select MIC Settings



- Enable the Phantom power supply on the microphone required



N.B. when the Merish2 is switched on, the Phantom power supplies are always off.

Important: connecting the phantom power supply to a conventional microphone could damage it beyond repair.

Using the PC keyboard

In some main functions, the Merish2 can be controlled directly by means of a model PS2 PC-compatible keyboard. This option speeds up song search operations.

Merish2 allows the following operations through a PC keyboard:

KEY	FUNCTION
SPACE BAR	Starts playing the song
ZERO	Stops playing the song, press twice to clear the memory
ENTER	Confirms the selection made
ESC	Same function as the Merish Esc button, deletes strings of text typed
F1	Activates the GO TO function (see page 25 and following pages of Merish manual)
F2	Activates the Next Song function (see page 24 and following pages of Merish manual)
F3	Activates the Smooth (see page 18 of Merish manual)
F4	Activates the Bridge (see page 19 of Merish manual)
F5	Activates the Harmonizer on the Mic 1 channel
F7	Activates the Search function (see page 23 of Merish manual)
F8	Activates the SONG INFO window, containing information about the song
F9	Activates the Search by Artist function (see page 22 of Merish manual)
F10	Activates the Search by Title function (see page 22 of Merish manual)
F11	Activates the Search by Genre function (see page 22 of Merish manual)
CANCEL	Deletes the selected song
BACKSPACE	Deletes the letter and moves the cursor back one space when typing
DOWN ARROW	Moves the cursor down one position
UP ARROW	Moves the cursor up one position
PAGE UP	Moves the cursor up one page
PAGE DOWN	Moves the cursor down one page
START [horizontal arrow]	Moves the cursor to the start of a file
END	Moves the cursor to the end of a file

NOTES ON THE MANUAL SUPPLIED

From page 6 onwards, the manual describes procedures for downloading Songs from a PC to the Merish. On the Merish2 we have introduced a number of optimisations which allow a data storage device (USB Pen or Compact Flash) to be read with no need to index its contents. Therefore it is not absolutely necessary to access the storage drive by means of the MERISH PC software, which however can be used if the user wishes to enter the specific Artist and musical Genre data for the Songs he has on file. The information provided in the manual therefore still applies but some functions while still available, are not necessary.

PAGE	FUNCTION	NOTE
6	Index updating	The Merish2 automatically re-indexes a memory from which one or more songs have been deleted. There is no need for memories to be updated in order for the Merish2 to read them.
8	Database updating	The Merish2 no longer suggests updating the database of any memories which do not have one. However, the database creation function can be used as described in the manual. This function should be carried out using the Merish PC software.
10	Downloading Songs from PC	It is now possible to download songs from a PC into a memory by simply copying them, without using the Merish PC software, if there is no need to index the memory and load the database information into it. However, these operations are still possible on the Merish2.
20	Enter / Loop button	The Enter / Loop button has been moved to a new position in the middle of the Alpha Dial. The SONG INFO button, which provides full information about the backing track being played, is in the position it used to occupy.
20	Volume setting	The procedures for setting the Mp3 / Midi / Mic volumes have been modified as described above. Micro Mixer Section.
21	Connector panel	The rear panel has been modified as described in the Rear Panel section.
23	A/Z Search	The function has been modified as described in the Search Screen section above.
30	Loop	The Enter / Loop button has been moved to a new position in the middle of the Alpha Dial.
31	Giving a name to a playlist	Playlist can be named using a PC keyboard
44	Harmonizer mode	The Harmonizer VOLUME parameter is controlled by the specific Harmony knob in the Micro Mixer. CAUTION: the Harmonizer only works on the Mic1 Channel.
46	Equalizer	The Merish2 has a 3 band equalizer which acts separately on each of the microphones and the backing track.